



Community Services Bulletin

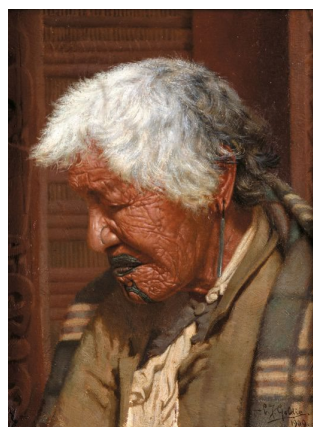
July 2024

1. REPORT OF THE DISTRICT ARTS & HERITAGE CURATOR (Jim Geddes)

Arts initiatives

Exhibition programme

Gathered Voices – Highlights from the Fletcher Trust Collection opened on 18 May. This was planned to coincide with the Gallery's 40th anniversary and we are very grateful to the Fletcher family, the trust, and curator Frances McWhannell for their generous support. Featuring works by significant national artists including CF Goldie, Rita Angus, Michael Smither and Tony Fomison, this is the only scheduled showing in Otago and Southland. The exhibition has proved to be very popular with the visiting public and will run through until July 28.



Performance and event programme

Events at the Gallery and Museum during June included a floor-talk by Fletcher Trust curator **Francis McWhannell** on 16 June.

The Gallery's permanent collection has been the subject of a major retrospective exhibition of artist **Marilynn Webb**. A total of 31 works were selected from our holdings and are currently being exhibited at Christchurch Art Gallery.

Our major exhibition for the gallery's 2024-25 anniversary year is ***He Hikoi a Te Awaawa Mataura – A Journey Through the Mataura Valley***. This four-month duration showing will feature the work of acclaimed botanical and wildlife artist **Jo Ogier** and involve a variety of community and educational programmes. To this end, we are grateful to **Community Trust South** for a welcome grant of \$6,000 to assist with these activities.

The latest temporary exhibition at the Croydon Aviation Heritage Centre – Mandeville, is ***Can You See It?*** – paintings by **Aine Atencia** (until 30 June).

Māruawai project

Stage One – Hokonui Moonshine Museum redevelopment

Final display fit-out continues within the museum as key components come to hand. Running concurrent to our display development is a fundraising momentum which has successfully garnered more than **\$140,000** from community agencies and individuals. This has helped replenish our original display budget that was exhausted by Covid related increases in building and material costs. Exterior development of the building is progressing, and external graphics and signage were just recently applied thanks to a generous donation from a local family trust. The annual **Old Hokonui Whiskey & Food Match** event was held on 28 May as part of the Tussock Country Festival and attracted just over 60 people.



Stage Two – Māruawai Centre development

Planning and costing for the fit-out of internal spaces within the eastern wing of the building is continuing and this process has been assisted greatly by the availability of the neighbouring Win Hamilton Wing as archive, storage and research space. Fit-out of the facility's workshop area is complete and the focus is moving towards fundraising initiatives to finance the full schedule of works. The space adjacent to the Hokonui Moonshine Museum carpark is also being scoped for paving, planting, and outdoor furnishing. Structural provision is now in place for the installation of sculptural gates (ex-Observation Point) by Ralph Hotere.

Precinct programmes

Community engagement and education programmes

We have continued to enjoy especially good numbers of tour parties, special interest groups and community organisations during May. Given the requirement for local schools to factor mana whenua history and other local content into the new curriculum, there has been considerable engagement with local educators. To this end, there has also been a significant call on the outcomes of our 16-year joint venture local research project with Hokonui Rūnanga. Key information from this source and the on-going research of Gore District Historical Society have combined to give significant strength to precinct holdings, and will help resource our Stage Two display

scenarios, and our many forthcoming education programmes, studio projects and community interactions.

Sample of community talks, tours and engagements (June):

Tussock Country tour, Gore Host Lions Club tour, Windsor Park tour, Compulsory Military Training (RSA) Group, Southland Oral History Group Workshop, Kāhui Whetū assistance, Auckland Art tours, Blue Mountain College.



Meetings and representations

Hokonui Rūnanga, Southland Regional Heritage Committee, Southland Museum and Art Gallery.

2. REPORT FROM THE LIBRARY MANAGER (Emma Sherie)

End of financial year statistics - July 2023 – June 2024

Gore Library

- Door count - 65,755 ↑ 34%
- Issues – 98,759 ↑ 38%
- WiFi usage – 11205 ↑ 117%
- Computer usage – 5269 ↑ 70%
- New sign-ups – 888 ↑ 18%
- Events – 184 ↑ 116%
- Attendance to events– 2902 ↑ 61%
- E-Resources issues – 12028 ↑ 45%

Gore Library statistics show an overwhelming increasing trend. Not just for coming into the library but also for issuing books. There has been a substantial trend in an increasing use of free Wi-Fi and computers which shows that people within the Gore District do not have equal access to computers and WiFi and many rely on the library to provide these services. The library plays an important part of reducing the digital divide within the community. Events and activities have also increased and these are being attended by more people. There has also been more use of e-resources like eAudiobooks and eBooks showing we are meeting a need for customers to consume written material in different formats. It also allows for those with sight and reading disabilities to have more access to audio content.

Mataura Library

- Door count - 8951 ↓ 5%
- Issues – 6527 ↓ 36%
- Wi-Fi usage – 15108 ↑ 16%
- Computer usage – 1225 ↓ 12%
- New sign-ups – 59 ↑ 2%
- Events – 42 ↑ 35%
- Attendance to events– 339 ↑ 44%

Mataura Library and Service Centre have been on reduced opening hours since the end of March 2024 which has impacted the number of people who have been able to use the service. These are still good statistics, and Wi-Fi and computers are also a very well-used resource for the community.

Matariki story time



This year for Matariki we hosted a Matariki story time at the Gore Library. Staff read books about Matariki to tamariki and whanau. Then we hosted an arts and crafts session. We had 30 children and 25 adults in attendance and it was a wonderful way to spend time with the community and welcome in Matariki. Libraries have a responsibility to reflect and embrace all cultures in our community. Hosting a Matariki event is part of our way of acknowledging the significance of tangata whenua.

Winter Reading Challenge!



It is that time of the year again when we launch our winter reading challenge for children and teenagers. This year we have a mascot. Pebbles the penguin. One of our fabulous staff members Kim has created an exciting life-size book where children and families can get a selfie with Pebbles and share it with their friends. Pebbles also has a scavenger hunt in the library for people to participate in. Libraries play a part in helping lift literacy in the community and reading challenges help do this. We look forward to reporting on the Winter Reading Challenge statistics soon.

June Library Statistics
Gore Library

Gore door count	2022-23	2023-24
July	5457	6706
August	5392	5983
September	5052	5699
October	5134	5642
November	4826	5174
December	4224	4061
January	0	5171
February	0	4703
March	1691	5366
April	5411	5525
May	6055	6223
June	5891	5502
Total	49133	65755

Gore issues	2022-23	2023-24
July	6821	10157
August	6361	9379
September	6055	8880
October	6168	7950
November	6119	7707
December	8331	6714
January	112	8133
February	247	6786
March	3697	7592
April	8785	8453
May	9617	8979
June	9086	8029
Total	71399	98759

Gore WiFi usage	2022-23	2023-24
July	370	882
August	460	1027
September	369	959
October	397	923

November	374	878
December	305	624
January	85	831
February	135	884
March	293	1030
April	584	954
May	928	1235
June	859	978
Total	5159	11205

Gore computer usage	2022-23	2023-24
July	248	471
August	259	477
September	242	483
October	262	503
November	266	470
December	210	410
January	0	501
February	0	411
March	78	497
April	415	510
May	566	536
June	546	492
Total	3092	5761

New members	2022-23	2023-24
July	38	135
August	31	101
September	30	70
October	23	79
November	22	56
December	21	39
January	1	71
February	4	54
March	96	67
April	159	79
May	205	80
June	124	57
Total	754	888

Mataura Library

Mataura door count	2022-23	2023-24
July	791	763
August	874	849
September	720	721
October	792	823
November	724	898
December	653	576
January	818	902
February	848	702
March	910	832
April	700	631
May	821	716
June	815	538
Total	9466	8951

Mataura issues	2022-23	2023-24
July	713	644
August	751	633
September	697	524
October	723	639
November	649	543
December	702	551
January	966	547
February	1507	498
March	1587	497
April	579	463
May	712	514
June	707	474
Total	10293	6527

Mataura WiFi usage	2022-23	2023-24
July	896	1256
August	1176	1298
September	1086	1292
October	1092	1457
November	1135	1436

December	963	1288
January	1062	1321
February	1001	1389
March	1121	1513
April	1022	1003
May	1214	979
June	1230	876
Total	12998	15108

Mataura computer usage	2022-23	2023-24
July	91	129
August	114	103
September	106	99
October	118	112
November	95	117
December	70	100
January	116	106
February	140	120
March	162	114
April	125	56
May	119	79
June	135	51
Total	1391	1186

New members	2022-23	2023-24
July	3	6
August	1	5
September	9	2
October	5	5
November	9	3
December	2	5
January	3	5
February	4	8
March	3	8
April	7	5
May	9	6
June	3	1
Total	58	59

Both libraries

E-resources issues	2022-23	2023-24
July	669	820
Aug	524	839
Sept	675	913
Oct	631	971
Nov	589	962
Dec	633	1085
Jan	731	1017
Feb	724	1024
Mar	722	1115
Apr	769	1083
May	812	1118
Jun	772	1081
Total	8251	12028

Catalogue searches	2022-23	2023-24
July	486	1926
August	497	1950
September	662	2290
October	612	2247
November	579	1901
December	1239	1439
January	423	2265
February	253	1903
March	2108	1878
April	2232	2449
May	1941	2025
June	1773	2024
Total	12805	24297

3. REPORT FROM PARKS AND RECREATION MANAGER (Keith McRobie)

Leaf collection dominated activity for the early part of the month, with all outstanding areas cleaned up. Many of our normal activities have been significantly impacted by the overly wet weather. Rose pruning is a good case in point as it should only really be carried out in dry weather to avoid infection of the pruning cuts. We have followed up with all our rose pruning's with a copper spray which helps to seal pruning wounds and provides good disease protection.

We have been able to complete all our normal hedge trimming around Gore and Mataura.

Update on ongoing and future projects

Bannerman Park improvements

A drinking fountain (with a dog drinking tray) has been installed in the lower park. More planting has occurred with rhododendrons, perennials and lifting/dividing a large area of overgrown Hostas. The access track behind the Hosta collection has had recycled stones from the gardens aviary placed over the entire length of the track to provide a free draining, stable and tidy surface.

Tulloch Park Stage 2 development

We have signed a contract with our chosen supplier Coombes Aquatics based out of Christchurch. There is a considerable lag period for construction due to the fact that most of the componentry splash pad fixtures, filtration and pump equipment has to be sourced from the USA.

We are working with the supplier and have targeted an opening date of late November 2024. We have insisted that the supplier uses local trades people for the excavation and concrete placement work. Some of the electrical and plumbing work will also be carried out by local contractors.

A number of the peripheral elements have needed to be sorted as part of the development including the perimeter fencing of the existing pump track and new splash pad area and providing a large stormwater sump to provide satisfactory drainage for the whole play area. The perimeter fence on the Glendhu Road and State Highway sides will be 1.5m high powder coated panels similar to the Elizabeth Street infiltration pond.

Tree work

Operations staff have continued working on street and park trees, primarily removing suckers, dead wood and lifting lower branches for better vehicle and pedestrian access.

The crew spent two days at Waikaka tidying up trees around the town. Most of the work was clearing branches away from the carriageway and was long overdue.

Delta arborists will be in town for a week in July completing work on some of our more difficult trees. This includes elms and oaks on Hokonui Drive close to high voltage lines and a large poplar tree removal sitting in the middle of a family plot at the Gore Cemetery.

Playgrounds

The replacement playground at Ingram Place in Mataura has been completed. The equipment is essentially an update on the existing older equipment with a colourful powder coated steel framed seesaw and triple swing unit that features a basket swing. The playground softfall is now contained within a timber boxed area.

Contractors have installed 12 Disc Golf nets at Hamilton Park and a further six nets will be installed in July as well as ground level disc golf tees. The layout of the course was decided after consultation with the former Youth Council and Active Southland. The Youth Council had raised some funds for the project from local sponsorship. The course is mostly around the perimeter of the main walking track and should not overly impact other park users.

Riparian planting

The planting at lower Hamilton Park has continued with assistance from the Gore Amenities Trust. Approximately 2500 plants were planted by school groups, Gore Rotary Club and a corporate team from Mataura Valley Milk. The planting now extends around the corner and partly down the Waikaka Walkway.

A further native 650 plants provided by the Hokonui Rūnanga have been planted at the south end of Mataura along the Waimumu Walkway. This work was carried out by parks staff, MCB, Mataura Lions and the whole Mataura school so very much a community effort.

Community engagement

We have been actively engaging with various groups, clubs, and organisations, including attending consultations, workshops, and meetings.

We have met with the following groups:

- Active Southland
- A&P Joint Management
- Southland Spaces and Places Guidance Group
- Southland Conservation Board
- NZ Deerstalkers Southland Branch (Deer Park)